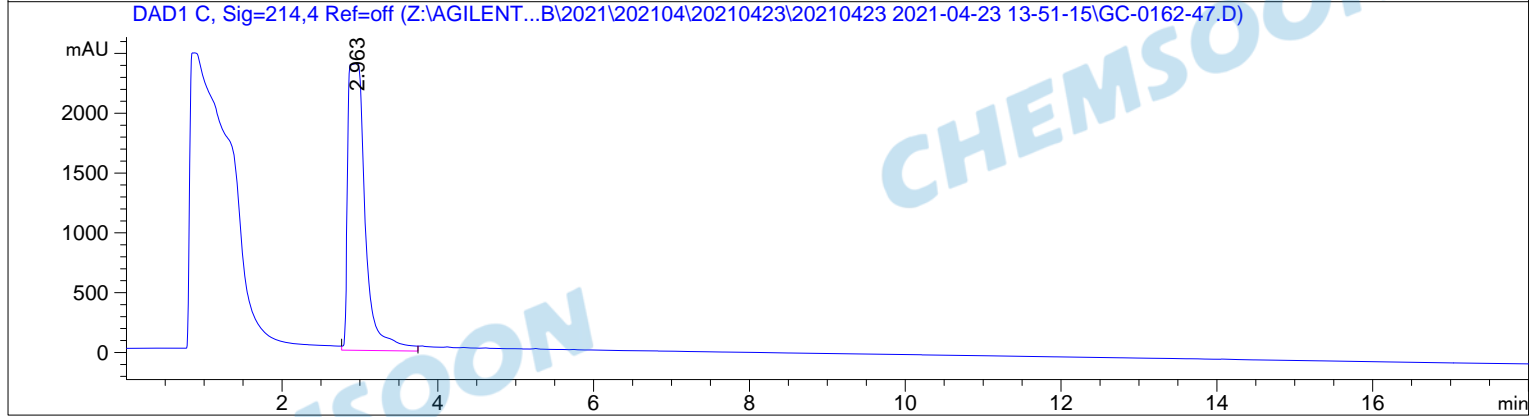
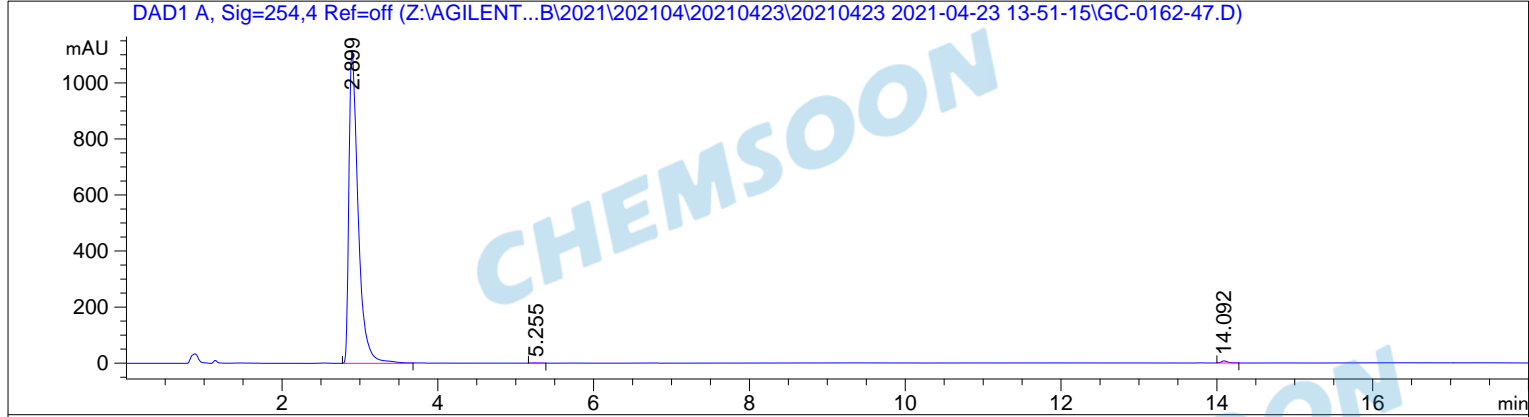


```

=====
Acq. Operator   : SYSTEM                               Seq. Line :    7
Acq. Instrument : LC1260 DAD                          Location  : Vial 8
Injection Date  : 4/23/2021 4:08:51 PM                Inj       :    1
                                                    Inj Volume: 2.000 µl
Different Inj Volume from Sequence !      Actual Inj Volume : 5.000 µl
Acq. Method    : D:\DATA\2021\202104\20210423\20210423 2021-04-23 13-51-15\HPLC-01-A2-
20160118.M
Last changed   : 4/23/2021 1:51:15 PM by SYSTEM
Analysis Method : C:\CHEM32\1\METHODS\DEF_LC.M
Last changed   : 4/23/2021 11:24:12 AM
                (modified after loading)
  
```



=====
 Area Percent Report
 =====

```

Sorted By      :      Signal
Multiplier:    :      1.0000
Dilution:      :      1.0000
Use Multiplier & Dilution Factor with ISTDs
  
```

Signal 1: DAD1 A, Sig=254,4 Ref=off

Peak #	RetTime [min]	Type	Width [min]	Area [mAU*s]	Height [mAU]	Area %
1	2.899	BB	0.1243	9181.05566	1111.76514	99.4898
2	5.255	BV	0.0736	7.36280	1.49099	0.0798
3	14.092	BB	0.0803	39.71791	7.43386	0.4304

Totals : 9228.13637 1120.68999

Signal 2: DAD1 C, Sig=214,4 Ref=off

Peak #	RetTime [min]	Type	Width [min]	Area [mAU*s]	Height [mAU]	Area %
1	2.963	VV	0.2081	3.74992e4	2402.32935	100.0000

Totals : 3.74992e4 2402.32935

=====
*** End of Report ***

CHEMSON

CHEMSON

CHEMSON

CHEMSON

CHEMSON