

CS018062

-13.28

8.02  
8.00  
7.93  
7.92  
7.53  
7.52  
7.51  
7.50

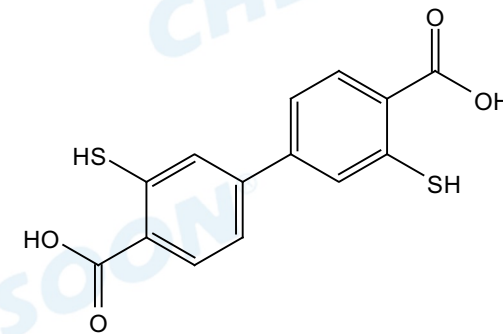
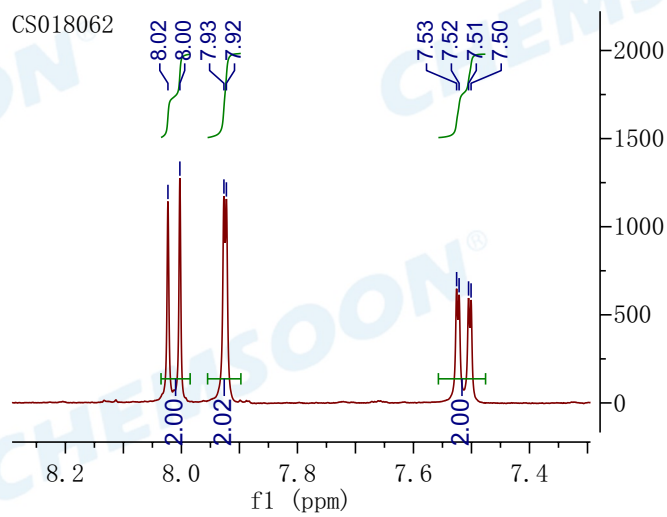
2.50

$^1\text{H NMR}$  (400 MHz, DMSO)  $\delta$  8.01 (d,  $J = 8.2$  Hz, 2H), 7.92 (d,  $J = 1.7$  Hz, 2H), 7.51 (dd,  $J = 8.3, 1.7$  Hz, 2H).

CS018062

8.02  
8.00  
7.93  
7.92

7.53  
7.52  
7.51  
7.50



16 15 14 13 12 11 10 9 8 7 6 5 4 3 2 1 0 -1 -2 -3  
f1 (ppm)

2.00  
2.02  
2.00

2600  
2400  
2200  
2000  
1800  
1600  
1400  
1200  
1000  
800  
600  
400  
200  
0  
-200