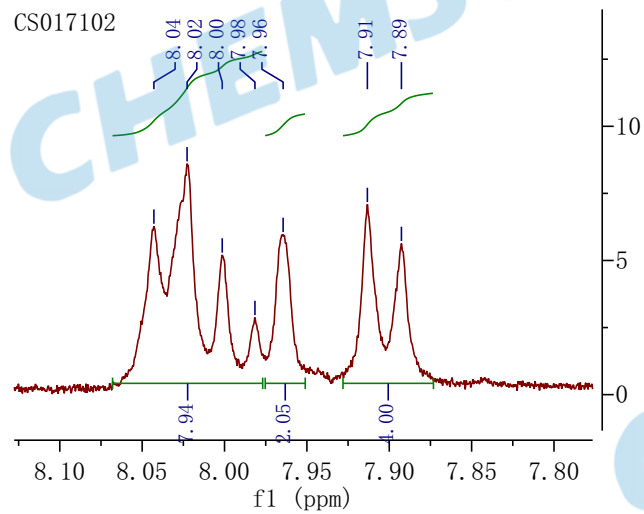


CS017102

$^1\text{H NMR}$  (400 MHz,  $\text{dms}\text{-}d_6$ )  $\delta$  8.01 (dd,  $J = 16.5, 8.0$  Hz, 8H), 7.96 (s, 2H), 7.90 (d,  $J = 8.3$  Hz, 4H).



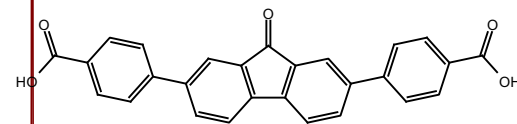
8.04  
8.02  
8.00  
7.98  
7.96  
7.91  
7.89

3.88

3.31

2.49

-0.01



15 14 13 12 11 10 9 8 7 6 5 4 3 2 1 0 -1 -2

f1 (ppm)

7.94  
2.05  
4.00